

D_sub - low profile - contact stamped

CONSULT SALES OR FACTORY FOR OTHER MOUNTING STYLE OPTIONS

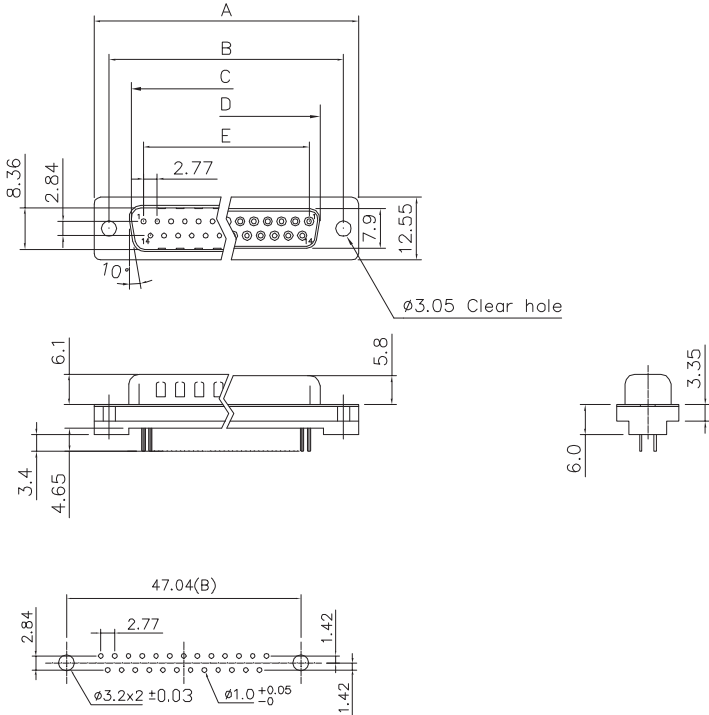
HH - hole dia.mm2,05 - clear hole

H1 - hole unc #4-40 with

H2 - hole unc #4-40 with board-lock

H8 - hole unc #4-40 with screws unc#4-40 with boardlock

HS - hole unc 4-40 - screws threaded M3 with boardlock



Recomended PCB Layout

| Dimensions | | | | | |
|------------|-------|-------|-------|-------|-------|
| Positions | A | B | C | D | E |
| 9 | 30.81 | 24.99 | 16.92 | 16.33 | 11.08 |
| 15 | 39.20 | 33.30 | 25.25 | 24.70 | 19.39 |
| 25 | 53.05 | 47.04 | 38.96 | 38.40 | 33.24 |
| 37 | 69.40 | 63.50 | 55.42 | 54.80 | 49.86 |

Product Specification

Material

Insulator :Glass-Filled Thermoplastic PBT,UL94V-0 rated

Contact :Brass

Shell : Steel, 100u" Tin Over 50u" min Copper

Clinch Nut: Brass, 100u" min Nickel Plated.

Boardlock :Brass, 100u" min Tin Plated.

Screwlock :Brass, 100u" min Nickel Plated.

Electrical

Contact Resistance :20 milliohms

Max at 1 AMP DC.

Insulation Resistance :1000

megohms at 500 VDC

Dielectric Withstanding Voltage :

1000 VAC/rms 60Hz for 1 minute

Current Rating :3 AMP

Volatge Rating :250 VAC/rms 60Hz

| FAMILY | MODEL | CONTACT TYPE | N° PIN | TYPE | CLIP PLATING | ACCESSORIES |
|--------|-------|--------------|--------|------------|----------------|-----------------------|
| DS | L | S | 09 | M [male] | F [flash gold] | HH [clear hole, 2 mm] |
| | | | 15 | | G [gold 15u"] | H1 [hole unc #4-40] |
| | | | 25 | F [female] | D [gold 30u"] | H2 [hole unc #4-40] |
| | | | 37 | | | H8 [screws unc#4-40] |
| | | | 50 | | | HS [screws ma 3.0] |



euro-conn



| UNITS: mm | | SHEET SIZE: ISO A4 | | SCALE:--- | | First angle projection |
|-----------|----------|--------------------|------------|-----------|--|------------------------|
| > 0 ~ 3 | > 3 ~ 18 | > 18 ~ 50 | > 50 ~ 120 | | | |
| ± 0.12 | ± 0.15 | ± 0.3 | ± 0.5 | | | |

DSLS