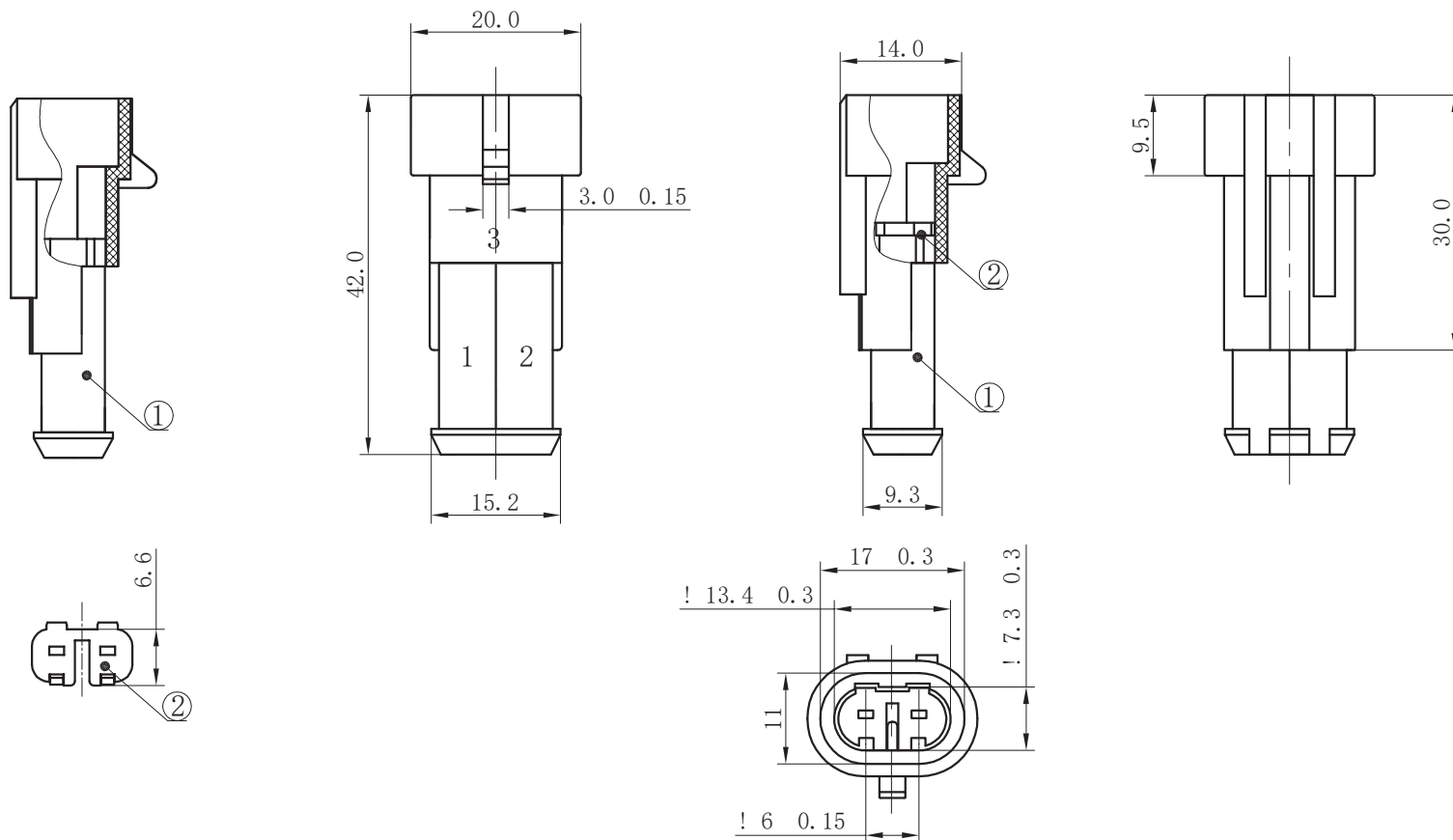


1. Parts may have affect the use of flash and injection molding defects,
2. The product surface is bright and clean, smooth, no volume marks, etc.,
3. The "\*" as the important features, "!" As the key features.
4. Note the tolerance size not implemented according to the GB - T14486-2008 - MT6 level.

②	LOCK	PA66+GF	1	RED
①	HOUSING	PA66	1	BLACK
	NAME	MATERIAL	Q' TY	COLOUR



**euro-conn**


$$\begin{array}{c} > 0 \sim 3 \\ \hline \pm 0.12 \end{array}$$
$$\pm 0.15$$
$$\begin{array}{c} > 18 \sim 50 \\ \hline \pm 0.3 \end{array}$$

> 50 ~ 120
± 0.5

! I prodotti e le caratteristiche possono cambiare senza preavviso.  
The products and their features may change without notice.

***CBDJ7021-1.5-11***