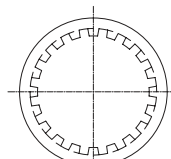
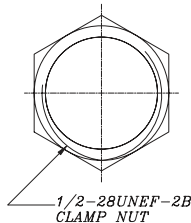


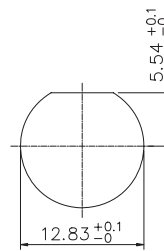
PC BOARD LAYOUT  
WITHOUT MOUNTING POSTS



LOCK WASHER



1/2-28UNEF-2B  
CLAMP NUT



RECOMMENDED  
MOUNTING HOLE

### Electrical Specifications

Impedance: 50 Ω nominal  
 Frequency Range: 0-4 GHz with low reflection  
 Voltage Rating: 500 volts peak  
 Dielectric Withstanding Voltage: 1,500 volts rms  
 VSWR :Straight connectors: 1.3 max 0-4 GHz  
 Right angle connectors: 1.35 max 0-4 GHz

### Contact Resistance

Center contact: 1.5 mΩ;  
 Outer contact: 0.2 mΩ

Insulation Resistance: 5,000 MΩ  
 Braid to Body: 0.1 milliohm  
 RF Leakage: -55 dB min at 3 GHz  
 Insertion Loss: 0.2 dB min at 3 GHz  
 Temperature Range: - 65°C to + 165°C

### Material

Male Contact: Brass  
 Female Contact: Beryllium copper or phosphorous bronze,  
 silver or gold-plated  
 Other Metal Parts: Brass, nickel finish  
 Insulator: TFE  
 Crimp Ferrule: Copper/brass

### General description of ordering code

FAMILY	MODEL	TYPE	VERSION	OHM	BODY
BNC	70	P	R	5 [50 ohm]	TFE
				7 [75 ohm]	



euro-conn



UNITS: mm

SHEET SIZE: ISO A4

SCALE: ----

> 0 ~ 3

> 3 ~ 18

> 18 ~ 50

> 50 ~ 120

± 0.12

± 0.15

± 0.3

± 0.5

! I prodotti e le caratteristiche possono cambiare senza preavviso.  
 The products and their features may change without notice.

RF COAXIAL