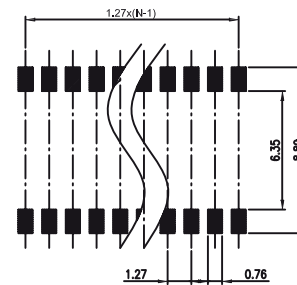
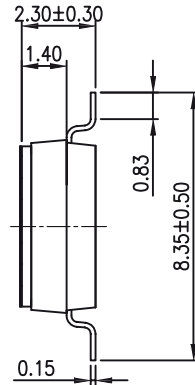
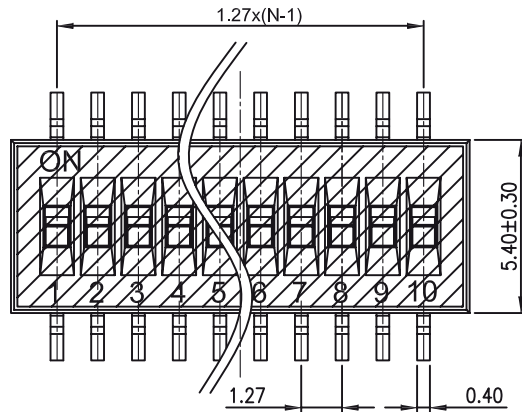


Specifications

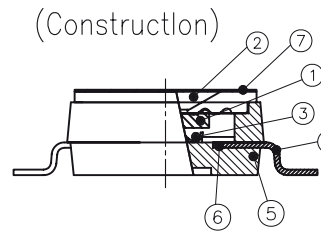
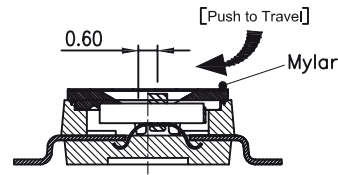
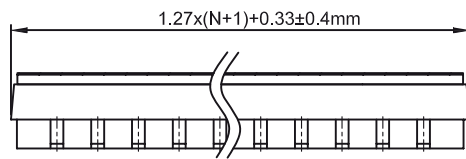
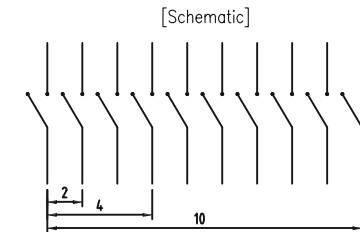
Contact Rating:	25 mA at 24VDC (switching) 100 mA at 50VDC (steady state)
Life:	1,000 cycles
Contact Resistance:	100mΩ Max.
Insulation Resistance:	100MΩ at 100VDC Min
Dielectric Strength:	300VAC Min
Storage Temperature:	-40°C ~ 85°C
Operating Temperature:	-40°C to 85°C
Operation Force:	9.8N Max.

Materials

Base & Cover:	PPS (UL94V-0)
Actuator:	PA46 (UL94V-0)
Contacts:	Brass, Gold / Tin Plate
Terminals:	Brass, Gold / Tin Plate
Mylar:	0.05mm UL94V-0 Mylar



RECOMMENDED P.C.B. LAYOUT (TOP VIEW)



Number	Part Name	Material	Finished
①	Actuator	UL94 V0	White
②	Cover	UL94 V0	Black
③	Movable	Beryllium Copper	3μ Gold
④	Terminal	Brass	1μ Gold
⑤	Base	UL94 V0	Black
⑥	Terminal Contact	Brass	3μ Gold
⑦	Mylar	UL94 V0	0.05mm

General description of ordering code

FAMILY	POSITIONS	TYPE	VERSION	OPTION	PACKAGE
EC7	XX	KPR [pitch 1,27]	N [color black]	0 [sealed]	T [tube]
				1 [no sealed]	R [reel]



euro-conn



UNITS: mm

SHEET SIZE: ISO A4

SCALE: ----

> 0 ~ 3

> 3 ~ 18

> 18 ~ 50

> 50 ~ 120

± 0.12

± 0.15

± 0.3

± 0.5

! I prodotti e le caratteristiche possono cambiare senza preavviso.
The products and their features may change without notice.

DIP SWITCH