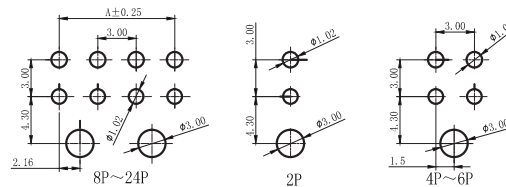
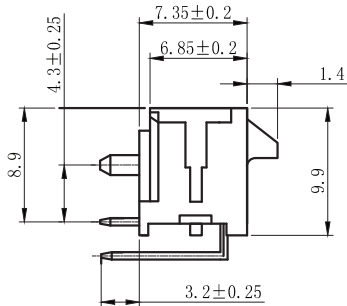
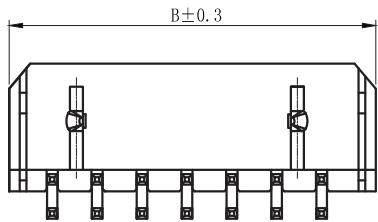
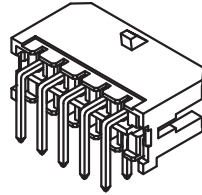
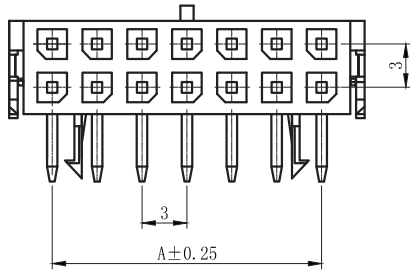


## Specifications

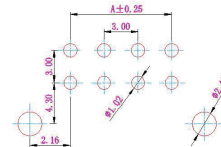
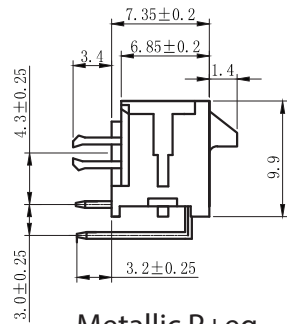
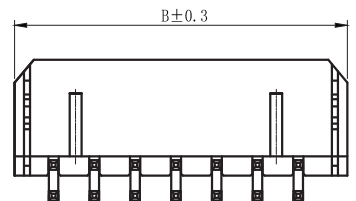
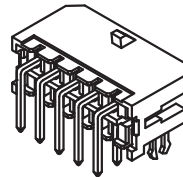
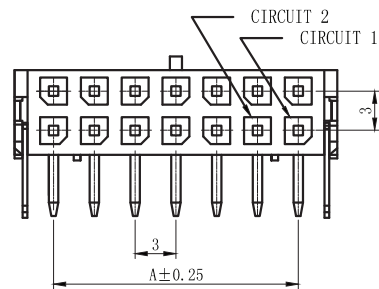
- 1、 Poles: 2 to 12P/2X1 to 2X12P
- 2、 Current rating: 5A AC,DC
- 3、 Voltage rating: 250V AC,DC
- 4、 Temperature range: -25° to +105°
- 5、 Contact resistance: ≤30mΩ
- 6、 Insulation resistance: ≥1000MΩ
- 7、 Withstand voltage: 1500V AC/minute
- 8、 Applicable wire: AWG #20 to #24
- 9、 Applicable PC board thickness: 1.6mm to 2.0mm
- 10、 Housing: PA66 (UL94V0)
- 11、 Wafer: Brass - Tin



P.C.B LAYOUT

Plastic Peg

Poles	Dimensions mm	
	A	B
2	----	6.65
4	3.0	9.65
6	6.0	12.65
8	9.0	15.65
10	12.0	18.65
12	15.0	21.65
14	18.0	24.65
16	21.0	27.65
18	24.0	30.65
20	27.0	33.65
22	30.0	36.65
24	33.0	39.65



P.C.B LAYOUT

Metallic P+eg

### General description of ordering code

FAMILY	MODEL	ROWS	POLES	PLATING	INSULATOR	OPTION	PACKAGING
<b>RM</b>	<b>MQ</b>	-	<b>2</b>	<b>XX</b>	<b>T</b> (tin)	<b>Z</b> [UL94-v0]	<b>1</b> [plastic peg]
						<b>4</b> [metallic peg]	<b>V</b> [tray]



**euro-conn**



UNITS: mm

SHEET SIZE: ISO A4

SCALE: ----

> 0 ~ 3

> 3 ~ 18

> 18 ~ 50

> 50 ~ 120

± 0.12

± 0.15

± 0.3

± 0.5

! I prodotti e le caratteristiche possono cambiare senza preavviso.  
The products and their features may change without notice.

**MICRO 300**