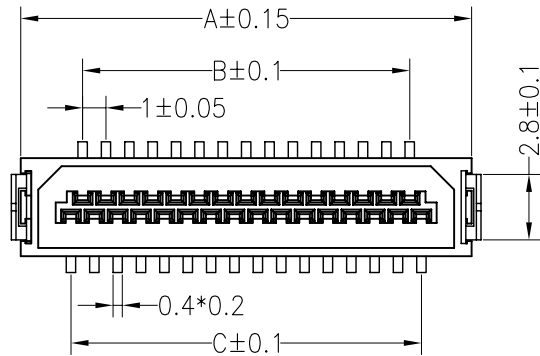


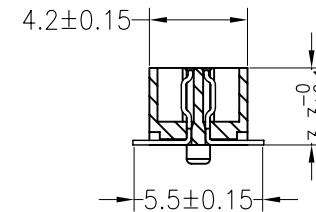
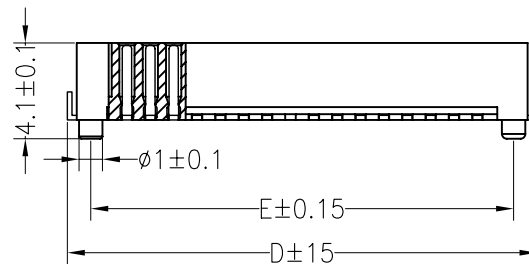
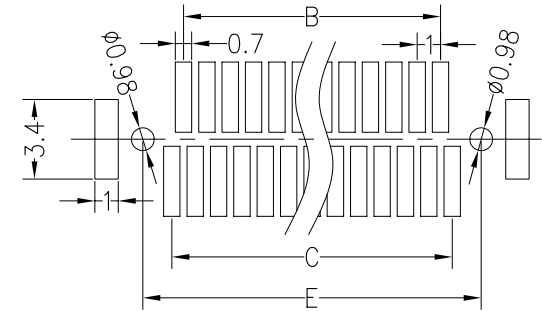
SPECIFICATIONS

Electical Rating: AC/DC 50V 0.5A
 Insulation Resistance: 500MΩ
 Withstang Volt: 200V AC/minute
 Opratng Temperature: -40°to+105°
 Material
 Contact: Phosphor Bronze Gold-Plated
 Housing: PA46

NO. OF Contacts	Dimensions				
	A	B	C	E	D
21pin	14.30	9.00	10.00	13.10	16.10
31pin	19.30	14.00	15.00	18.10	21.10
41pin	24.30	19.00	20.00	23.10	26.10
51pin	29.30	24.00	25.00	28.10	31.10

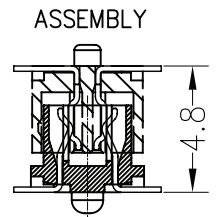


Recommended P.C.B Layout(Top Side)
 (PCB BOARD TOLERANCE±0.05)



General description of ordering code

FAMILY	PITCH	N° PIN	VERSION	MODEL	PLATING	HEIGHT	PEG	PACKAGE
STS	100	-	XX	M [straight]	S [Socket]	F [gold flash]	33	1 [Standard]
					G [gold 5u']			T [tube]
					D [gold 15u']			R [reel+cap]



		UNITS: mm		SHEET SIZE: ISO A4		SCALE: 10:1		First angle projection Board to Board
		> 0 ~ 3	> 3 ~ 18	> 18 ~ 50	> 50 ~ 120			
		± 0.12	± 0.15	± 0.3	± 0.5			