

SPECIFICATIONS
PERFORMANCE

Electical Rating: AC/DC 50V 0.5A

Insulation Resistance: 500M Ω

Withstang Volt: 200V AC/minute

Opratng Temperature: -40°to+105°

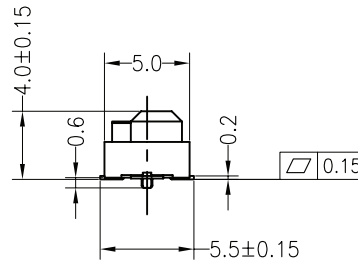
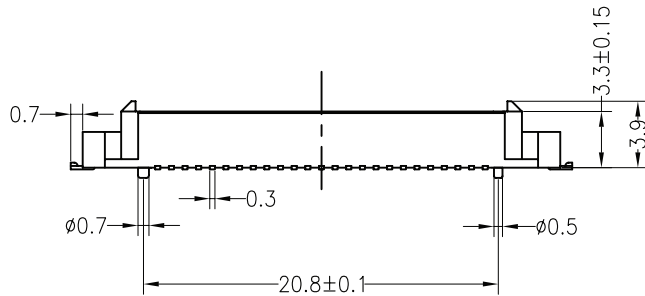
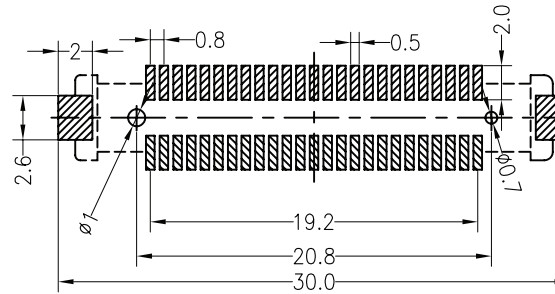
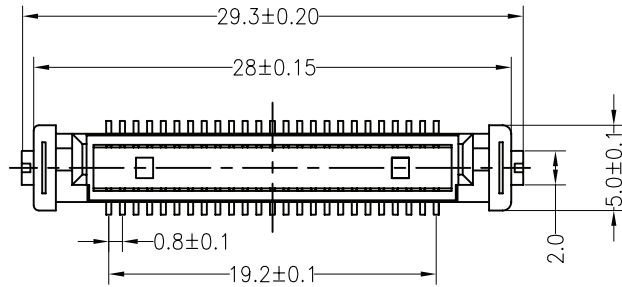
Material

Contact: Phosphor Bronze Gold-Plated

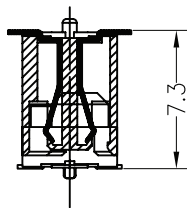
Housing: LCP

Max.Processing Temp: 230°C for 30-60 seconds
(260°C for 10 seconds)

Recommended P.C.B Layout(Top Side)
(PCB BOARD TOLERANCE \pm 0.05)



ASSEMBLY



General description of ordering code

FAMILY	PITCH	N° PIN	VERSION	MODEL	PLATING	HEIGHT	PEG	PACKAGE
STS	080	- XXX	M [straight]	S [socket]	F [gold flash]	033 [Standard]	1 [Standard]	V [tray]
					G [gold 5u']			T [tube]
					D [gold 15u']			R [reel+cap]

UNITS: mm

SHEET SIZE: ISO A4

SCALE: ----

> 0 ~ 3

> 3 ~ 18

> 18 ~ 50

> 50 ~ 120

\pm 0.12

\pm 0.15

\pm 0.3

\pm 0.5

! I prodotti e le caratteristiche possono cambiare senza preavviso.
The products and their features may change without notice.

BOARD TO BOARD



euro-conn

